



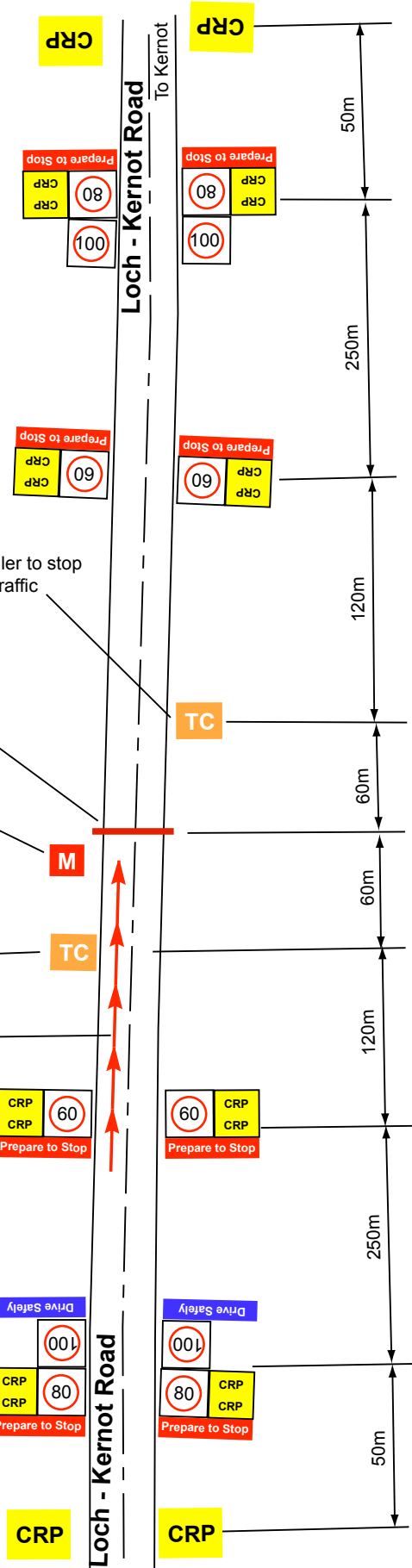
Finish line approximately 500m south of intersection of Stewart and Loch - Kernot Roads

Traffic Controller to stop south bound traffic as required

Race Marshall to assist Traffic Controller as directed

Traffic Controller to stop north bound traffic as required

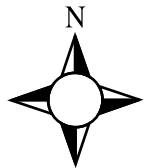
Race direction



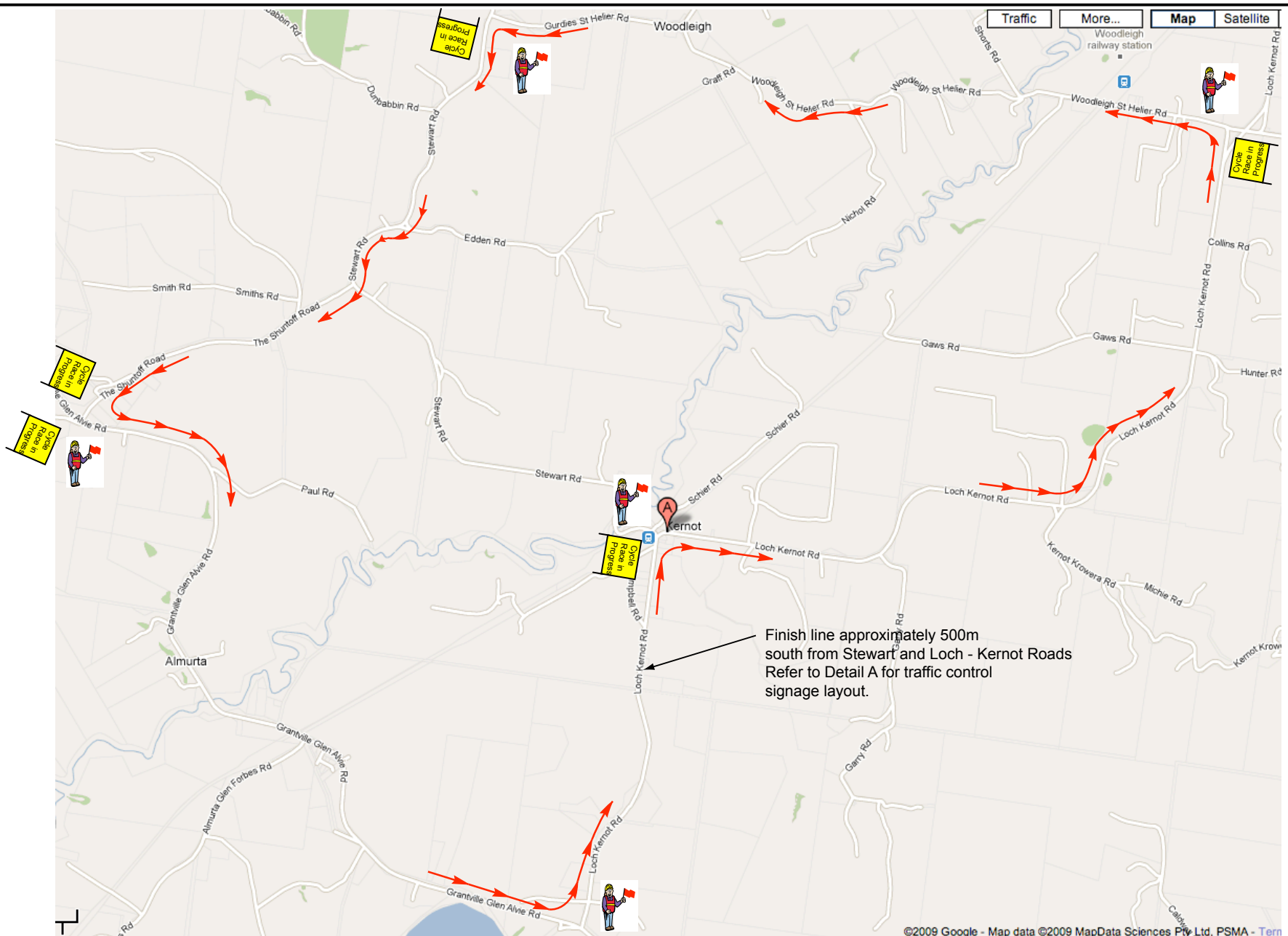
Eastern Veterans Cycling Club

Kernot Road Race Course Traffic Management Plan

Audited By:	Signed:	Date:
Drawing Reference:	Drawn: Hylton Preece	Date: 16/11/09
Detail A	Signed:	Date:



Not to Scale



Finish line approximately 500m south from Stewart and Loch - Kernot Roads
Refer to Detail A for traffic control signage layout.

©2009 Google - Map data ©2009 MapData Sciences Pty Ltd, PSMA - Tern

Race direction → → → →



Race marshal



Notes:

1. All significant intersections to have corner marshal
2. Cyclists to stop on direction of corner marshals
3. Large Cycle Race in Progress signs to be placed facing on coming traffic at all significant intersections



Eastern Veterans Cycling Club

Kernot Road Race Course Traffic Management Plan

Audited By:

Signed:

Date:

Course Overview

Drawing Reference

Drawn: Hylton Preece

Date: 16/11/09

Signed:

Date: